

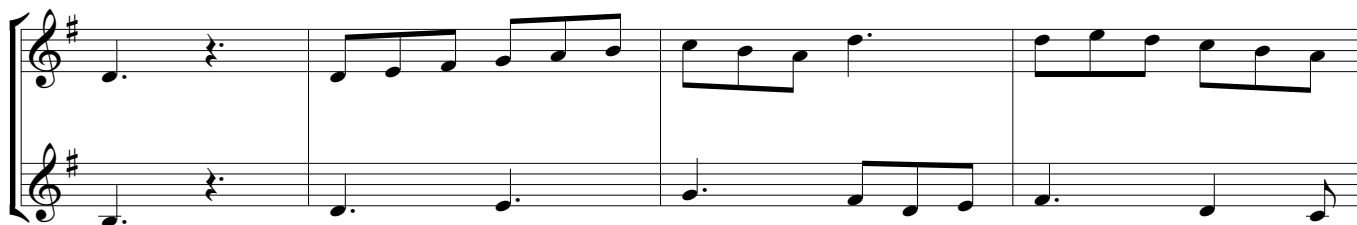
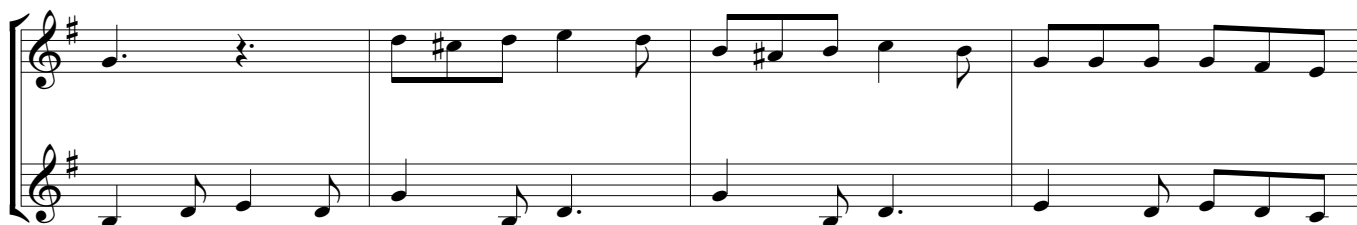
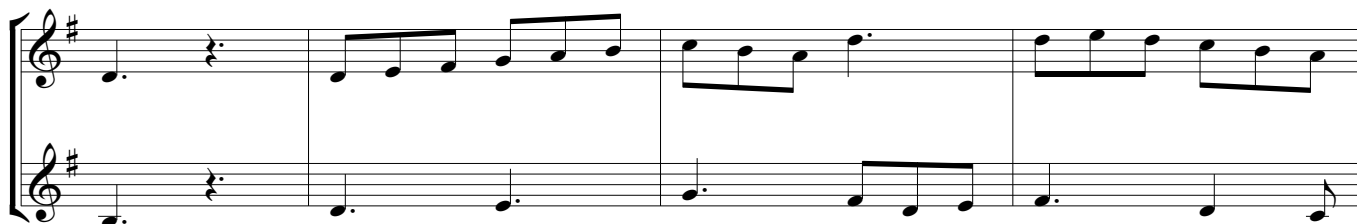
# BIBBIDI-BOBBIDI-BOO

(The Magic Song)  
from CINDERELLA

CLARINETS

Words by JERRY LIVINGSTON  
Music by MACK DAVID  
and AL HOFFMAN

Brightly, in 2



© 1948 Walt Disney Music Company  
Copyright Renewed.  
All Rights Reserved. Used by Permission.

A musical score for the song 'The Rose Tree'. It consists of two staves, both in G major (one sharp). The top staff is the melody, and the bottom staff is the accompaniment. The melody starts with a quarter note G, followed by a quarter rest, then eighth notes A and B, a quarter note C, and eighth notes D and E. The accompaniment starts with a quarter note G, followed by eighth notes A and B, a quarter note C, and eighth notes D and E. The melody continues with a quarter note F#, a quarter note G, and a quarter note A. The accompaniment continues with a quarter note F#, a quarter note G, and a quarter note A. The melody ends with a quarter note B, and the accompaniment ends with a quarter note B.

A musical score for the song 'The Rose Tree'. It consists of two staves, both in G major (one sharp) and 2/4 time. The melody is written on the top staff, and the accompaniment is on the bottom staff. The melody starts with a quarter note G, followed by an eighth note A, a quarter note B, and a quarter note C. It then has a half note D, a quarter note E, and a quarter note F. The melody continues with a quarter note G, a quarter note A, a quarter note B, and a quarter note C. It then has a half note D, a quarter note E, and a quarter note F. The melody ends with a quarter note G, a quarter note A, a quarter note B, and a quarter note C. The accompaniment starts with a quarter note G, followed by a quarter note A, a quarter note B, and a quarter note C. It then has a half note D, a quarter note E, and a quarter note F. The accompaniment continues with a quarter note G, a quarter note A, a quarter note B, and a quarter note C. It then has a half note D, a quarter note E, and a quarter note F. The accompaniment ends with a quarter note G, a quarter note A, a quarter note B, and a quarter note C.

A musical score for the song 'The Rose Tree'. It consists of two staves, both in treble clef with a key signature of one sharp (F#). The music is written in a simple, folk-like style. The first staff begins with a treble clef and a sharp sign. The melody is composed of eighth and quarter notes. The second staff also begins with a treble clef and a sharp sign. The melody is composed of eighth and quarter notes. The music is written in a simple, folk-like style.

A musical score for the song 'The Rose Tree'. It consists of two staves, both in treble clef with a key signature of one sharp (F#). The melody is written on the upper staff, featuring a series of eighth and sixteenth notes with a descending line. The lower staff provides a simple harmonic accompaniment using dotted half notes and quarter notes. The piece concludes with a double bar line.